

CONDUCTING A VOTER REGISTRATION DRIVE IN IDAHO



✓ VOTER REGISTRATION DEADLINES

- Received by election officials or postmarked by 25 days before Election Day.
- Idaho also allows voters to register in person during early voting or on Election Day.

GETTING STARTED

Training Requirement: Idaho does not require training for registration drives.

Notification and Registration Requirements: Idaho does not have notification requirements for registration drives.

Compensation Restrictions: Do not pay registration drive participants based on how many registrations they collect. Do not offer an applicant any incentive of monetary value to register to vote.

OBTAINING APPLICATIONS

State Form: The state mail-in voter registration application can be obtained at the county clerk's office or downloaded from the Secretary of State's Vote Idaho website.

A direct link to the form itself is located here: sos.idaho.gov/elections/forms/voter_registration.pdf

Federal Form: The federal mail-in voter registration application may be used in Idaho registration drives: eac.gov/voters/national-mail-voter-registration-form/

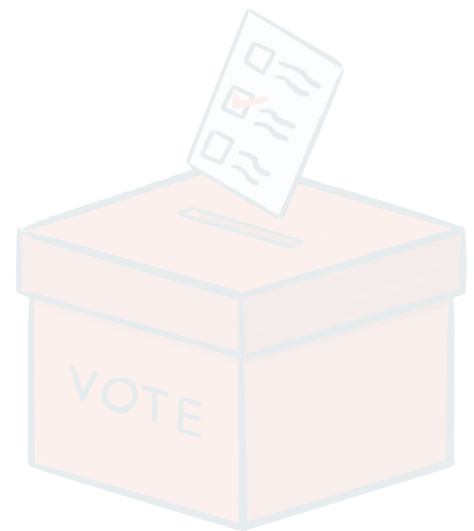
Mailing address: Secretary of State
P.O. Box 83720 State Capitol Bldg. Boise, ID 83720-0080.

Photocopying Blank Forms: Blank applications may be photocopied and used in voter registration drives.

HANDLING APPLICATIONS

Incomplete Applications: Do not fill in any missing information on a registration form unless you have express consent from the applicant.

Photocopying Completed Applications: As a best practice, a voter's full or partial Social Security number and/or driver's license number should not be retained.



Fair Elections Center and its Campus Vote Project intend the information contained herein to be used only as a general guide. This document should not be used as a substitute for consultation with a licensed Idaho legal professional.

Last updated May 2025



See the online version of this guide at:
bit.ly/ID_VoterRegDriveGuide